

# WARRANTY

(Effective January 1, 2002)

## NOTICE

Our system will automatically register the equipment on the date it was shipped to you. If the equipment was not purchased directly from HIX, but through a distributor (either domestic or foreign), please keep a copy of their sales invoice showing the serial number and date it was sold/shipped to you with this warranty. In this case, we will use the distributor's invoice date as the beginning warranty date. **STAPLE A COPY OF YOUR RECEIPT TO THIS WARRANTY** and keep in a safe place to provide verification of your warranty should a problem occur. Thank you.

Please fill in the following information and attach a copy of your receipt for your records.

Date Purchased: \_\_\_\_\_ From: \_\_\_\_\_

Model #: \_\_\_\_\_ Serial #: \_\_\_\_\_

This warranty applies to equipment manufactured by the HIX Corporation (HIX), Pittsburg, Kansas, U.S.A. HIX warrants to the original purchaser, its Conveyor Dryers, Heat Transfer Presses, Mug Presses, Mug Glazer, Retensionable Screen Frames, Textile Printers, Spot Heaters, and Exposure Units against defects in workmanship and material, except for wear and tear for a period of "One Year" from the date of purchase. HIX warrants its Accessories, Reten Splines/Hardware/Tool Kit, and Shuttle for a period of 90 days from the date of purchase. Freedom, Geometric, and Thematrol products are covered under separate warranty.

In the event of a defect, HIX, at its option, will repair, replace or substitute the defective item at no cost during this period subject to the limitations of insurance and shipping costs stated below.

In the case of heat transfer presses (except the Mug Press, Hobby Lite, and FH-3000 Flat & Cube Press), HIX warrants the heat casting for the "Life" of the machine for the original purchaser. If a part becomes obsolete at the time for repair, and/or cannot be reasonably substituted for, HIX will credit, at half the then current list price or last recorded price, only that part toward a new machine or any product HIX offers. This credit offer shall be the sole responsibility of the HIX Corporation in the event of an obsolete part.

This warranty does not cover normal wear and tear of belts, pads, mug wraps, mug press liners, canvas, rubber blankets, bulbs, glass, Teflon or finish, PST screens, damages due to accident, misuse/abuse, alterations or damage due to neglect or lack of proper lubrication or maintenance. HIX shall not be responsible for repairs or alterations made by any person without the prior written authorization by HIX. This warranty is the sole and exclusive warranty of HIX and no person, agent, distributor, or dealer of HIX is authorized to change, amend or modify the terms set forth herein, in whole or in part.

In the case of a problem with the equipment identified herein, HIX Corporation should be contacted during regular business hours to discuss the problem and verify an existing warranty. HIX personnel will assist the customer to correct any problems which can be corrected through operation or maintenance instructions, simple mechanical adjustments, or replacement of parts. In the event the problem cannot be corrected by phone, and upon the issuance of a return authorization by HIX, the equipment shall be returned to HIX or an authorized service representative. All insurance and shipment/freight costs are solely the responsibility of the customer, and not that of HIX, and HIX shall not be responsible for improper handling or damage in transit. HIX offers a reconditioning service and a core exchange/credit policy on some models. HIX customer service personnel may be contacted for complete return authorization and reconditioning information.

This expressed warranty is given in lieu of any and all other warranties, whether expressed or implied, including but not limited to those of merchantability and fitness for a particular purpose, and constitutes the only warranty made by HIX Corporation.

In no event shall HIX's liability for breach of warranty extend beyond the obligation to repair or replace the nonconforming goods. HIX shall not be liable for any other damages, either incidental or consequential, or the action as brought in contract, negligence or otherwise.

This warranty gives you specific legal rights and you may also have other rights which vary from state to state.

*Manufacturers of the Finest Quality Textile and Graphics Screen Printing and Heat Transfer Equipment*

1201 E. 27th Terrace • Pittsburg, KS 66762 • U.S.A.

(620) 231-8568 • Fax: (620) 231-1598

E-Mail: mail@hixcorp.com • Website: www.hixcorp.com

# Spot Heaters

## Models 1616 & 1822

### OWNER'S MANUAL



**For Customer Service Call,  
(620) 231-8568**

## CONTENTS

Installation .....	2
Set Up .....	3
Operation .....	3-4
Fuse Replacement .....	5
Switch On/Off Replacement .....	5
Switch On/Off Bypass .....	5-6
Timer Replacement .....	6
Temperature Controller Replacement .....	6-7
Resistor Replacement .....	7
Troubleshooting .....	8-9
Parts Identification .....	10-11
Warranty .....	12

# INSTALLATION

## Installation

**WARNING:** Before installation, be sure on/off switch is off and machine is unplugged.

1. Remove the spot heater and its base from the shipping box. Inspect it for damage and report any damage you find to your shipper immediately.
2. Insert pedestal tube into base. Tighten knob at the bottom of base to secure pedestal in place. **NOTE:** On 18 x 22, tighten hex bolt.
3. Place spot heater on top of pedestal tube. Tighten the two knobs to secure spot heater in place. **NOTE:** On 18 x 22, tighten two hex bolts.
4. To adjust height, loosen two knobs along the pedestal tube, move tube up or down to desired height and retighten knobs.
5. Remove shipping tape and packing material from spot heater.
6. If you have a 16 x 22 or 18 x 22 SH or ASH model, you may install wheels to the base. To do this, place one black washer on the end of the pre-welded nut on the end of leg tube. Then place the wheel in-between that washer and another one before inserting shoulder bolt through all holes. Tighten fully and then back off 1/8 of a turn so that wheels may move freely.

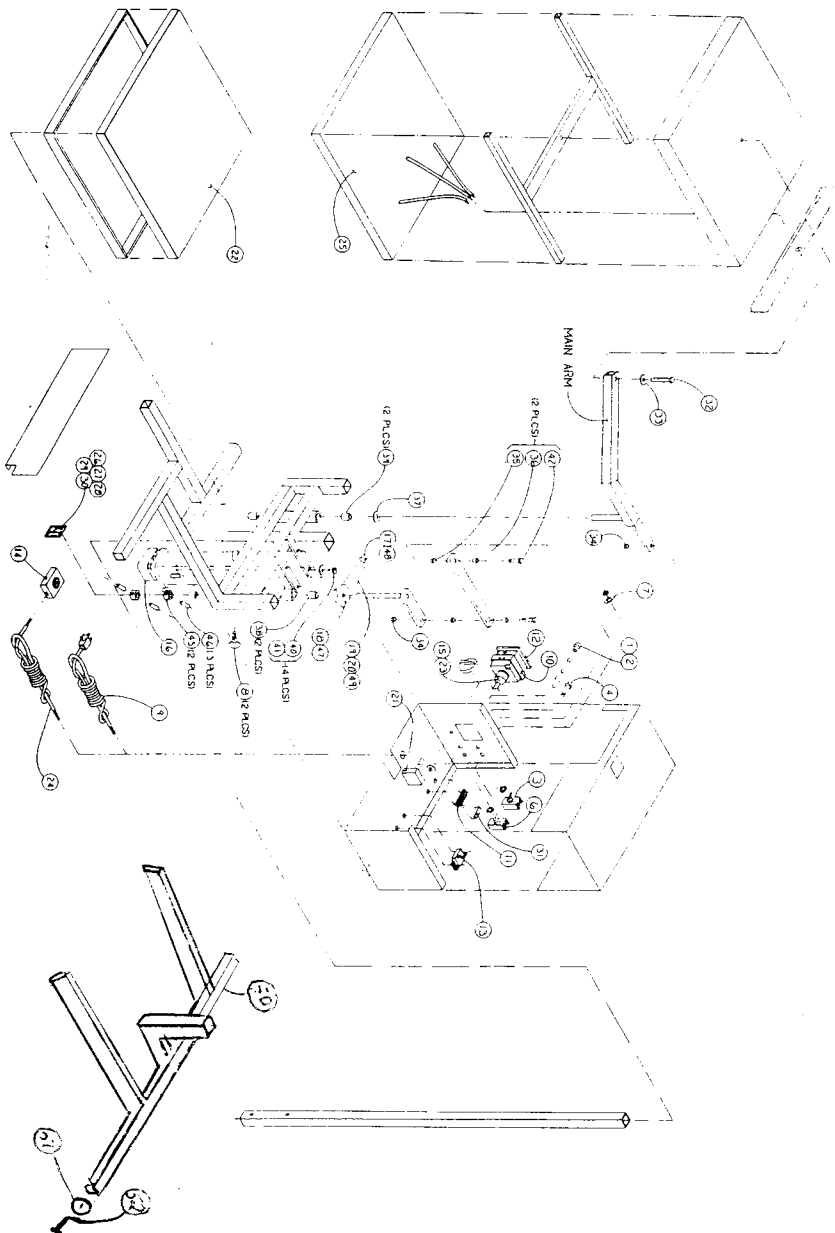
# PARTS IDENTIFICATION

Description	Part No.	Description	Part No.
1 Fuse Holder	13037	25 Heater Hix 16 x 16	84277
2 Fuse MDA-20 (110V)	83709	26 Board Circuit	87437
MDA-10 (220V)	76752	27 Switch Emitter Detector	87452
3 Switch On/Off	90399	28 Varistor (110V)	80895
4 Light Red (110V)	14233	(220V)	83683
5 Switch Plate Auto/Man	16105 *	29 Capacitor	90415
6 Switch Auto/Man	90373	30 Diode Silicone Rectifier	90456
7 Switch Plate Off/On	16105	31 Resistor	90431
8 Screw Thumb NC 3/8 x 1	39677	32 Bolt HH NC 1/2 x 1-3/4	10934
9 Cord Power (110V)	39768	33 Washer Flat 7/16	12229
(220V)	72496	34 Nut Greer NC 5/16	71662
10 Timer Bracket	89334	35 Nut NC 5/16-18	14605
11 Terminal Board (5KT)	72249	36 Bushing P31-2	11445
12 Timer (Omron)	88336	37 Washer Fiber	81893
13 Circuit Breaker	80911	38 Bushing P52-4	70904
14 Switch Foot	80945	39 Bushing P62-4	49106
15 Timer Cap	89458	40 Screw Mach 10-32 x 3/4	81232
16 Motor (3M257)	80960	41 Washer Flat 3/15	16774
17 Sprocket 1/4	80994	42 Bolt HH NC 5/16 x 1-1/4	10777
18 Sprocket 3/8"	81000	43 Bolt HH NC 1/4 x 1-3/4	10710
19 Chain Roller #25	81018	44 Nut HX NC 1/4-20	14548
20 Chain Link Master #25	81026	45 Collar Set	90357
21 Control Range (110V)	83667	46 Pin Tension 3/32 x 1/2	87460
(220V)	83663	47 Pin Tension 3/16 x 1-1/2	76950
22 Board Cera Form	90845	48 Pin Tension 1/8 x 1/2	81885
23 Timer Socket	89359	49 Chain Off Set Link #25	84509
24 Cord Bulk 10 ft.	83717		

\* Custom Cut Part

## PARTS IDENTIFICATION

### Exploded View



## OPERATION

### Initial Set Up

**NOTE:** The ASH, MSH, and SH models operate slightly differently when curing. Pay close attention to understand how your model operates.

1. Turn machine on.
2. Turn Auto/Man switch to Man. **NOTE:** MSH model is manual only.
3. Turn heat off.
4. Depress foot switch. Heat head will move to curing position.
5. Loosen knobs (or hex bolts for 18 x 22) and position the heater head approximately 2" above the curing area and retighten knobs.
6. Depress foot switch. Heater should return to rest position.

**NOTE:** In the manual mode the heater head only moves after the foot switch has been depressed.

### Operation

1. Turn machine on.
2. Turn auto/man switch to auto.
3. Set temperature to "6".

**CAUTION:** DO NOT OPERATE TEMPERATURE ABOVE LEVEL 6.

## OPERATION

4. To set the timer set the right most window to "S" and the leftmost window to "D".
5. Set the time in the three middle windows. Fifteen seconds would be set as 015.
6. Depress the foot switch.
7. Head will move to curing position and stop.
8. When set time has elapsed, the heat head will automatically return to the rest position and timer will reset.

### Cooling Procedure

Cool down time must be allowed before shutting down.

1. Move element away from bottom heat-sink.
2. Turn temperature control off.
3. Allow fans to run for 10 minutes to cool machine.
4. Turn off machine.

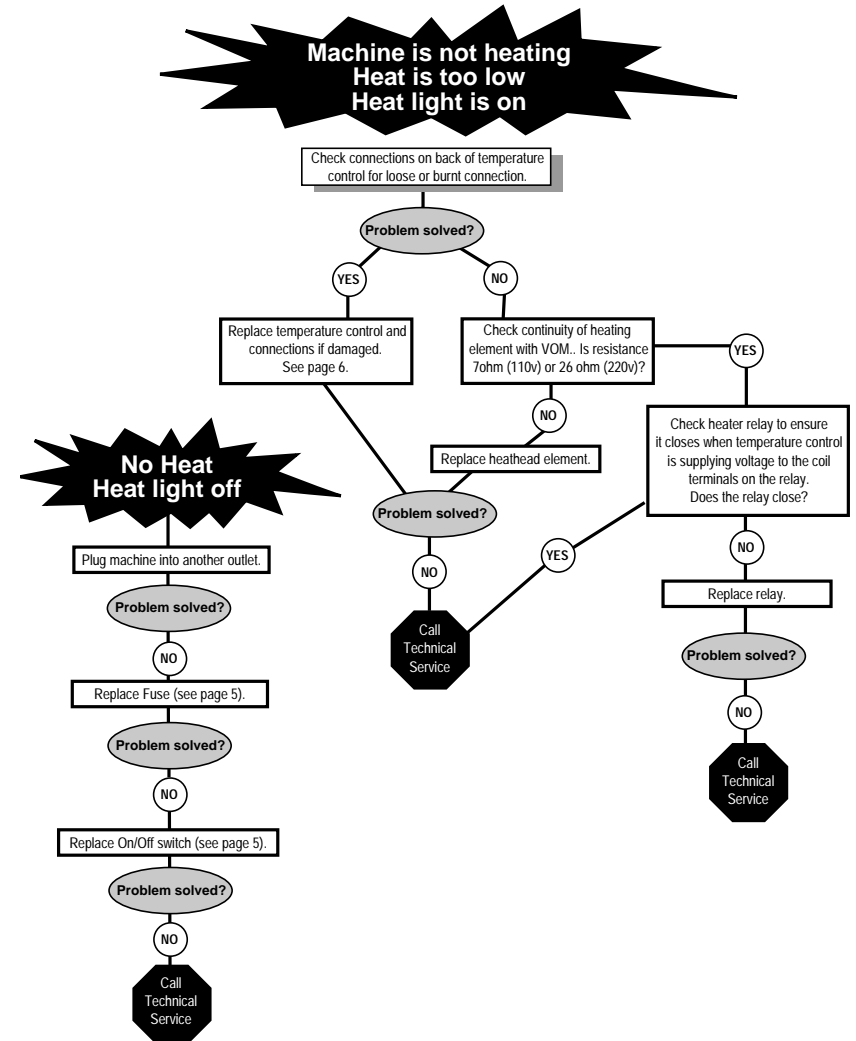
**\*\*Failure to follow these procedures will void warranty.\*\***

**NOTE:** The operator will need to try various times and temperatures in order to find the optimum settings for a particular job. These setting should be recorded in a job manual for future use.

**If you are operating a MSH model you will need to move and reset your timer manually for every cure.**

## TROUBLESHOOTING

**WARNING:** Before making repairs, be sure on/off switch is off and machine is unplugged!

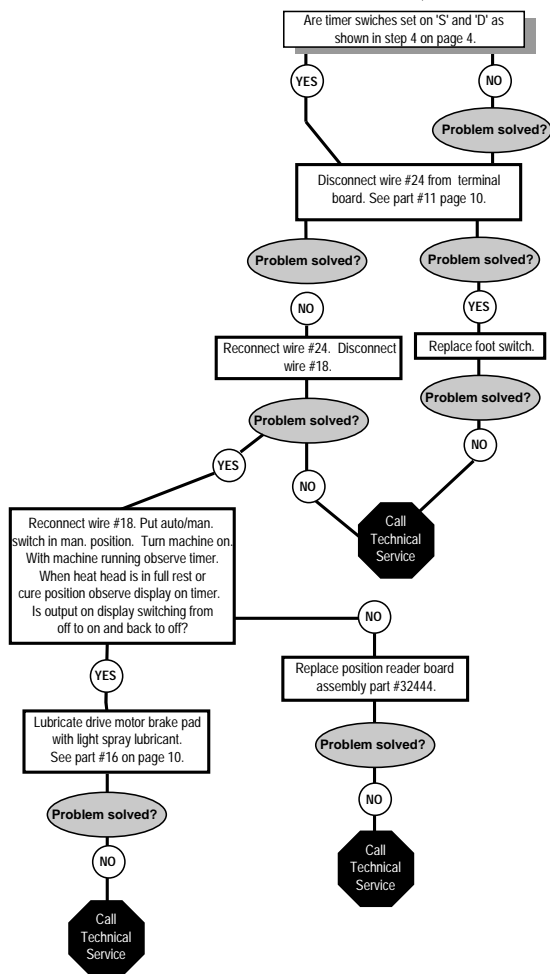


\* Customer Service Tech Sheets are available for this step. Call Tech Service # on the cover of this owner's manual and we will send you one.

# TROUBLESHOOTING

**WARNING:** Before making repairs, be sure on/off switch is off and machine is unplugged!

**Heat head runs continuously and will not stop in the cure or rest position**



\* Customer Service Tech Sheets are available for this step. Call Tech Service # on the cover of this owner's manual and we will send you one.

# REPAIRS

## Fuse Replacement

**WARNING:** Before making repairs, be sure on/off switch is off and machine is unplugged!

1. Push in on fuse cap and turn counterclockwise. Remove blown fuse. Replace with the proper fuse.  
(120V) ..... MDA-20  
(220V) ..... MDA-10
2. Insert new fuse in cap. Push in and turn clockwise.

## Switch On/Off Replacement

**WARNING:** Before making repairs, be sure on/off switch is off and machine is unplugged!

1. Remove cover screws and take off cover.
2. Use 9/16" wrench to remove securing nut around switch.
3. Pull switch out from rear.
4. Remove four wires from the switch.

**NOTE:** Remember wire placement. If in doubt refer to wiring diagram on back of machine cover.

5. Install new switch.

## Switch On/Off Bypass

1. Follow steps 1 through 3 in switch replacement.
2. Remove one set of switch wires.

## REPAIRS

3. Loosen the remaining wire terminals and slip the removed wires under the terminals.
4. Tighten terminal screws.
5. Plug machine back into outlet.
6. If machine functions normally, replace switch.

**WARNING:** DO NOT CONTINUE TO OPERATE MACHINE WITH SWITCH BYPASSED.

### Timer Replacement

1. Remove screws from cover and take off cover.
2. Pull timer socket off of back of timer.
3. Grasp timer face and pry the plastic tab on the side outward and pull gently on the timer. Use the same procedure on the opposite tab.
4. Continue step 3 until the timer is free of the plastic bracket.
5. Install the new timer.

### Temperature Controller Replacement

**NOTE:** It is necessary to remove the timer before the temperature controller can be replaced.

1. Disconnect the five wires from the temperature control. Note the placement so that the wires can be replaced correctly.
2. Pull temperature control dial located on the outside of machine, off.

## REPAIRS

3. Remove the two screws behind dial.
4. Install new controller.

**NOTE:** Be sure the tan heater wires fit tightly on the new control. If terminals appear discolored because of excessive heat, replace them with new terminals.

### Resistor Replacement

1. Locate the resistor, part 31 on page 7.
2. Grasp the push-on terminals and pull gently to remove the resistor.
3. Install the new resistor by pushing the terminals onto the terminal board.

**CAUTION:** Be sure the resistor is connected to the correct terminal wires.