

Specifications

Model		SP-540V	SP-300V
Printing / Cutting method		Piezo ink-jet method / media-moving method	
Acceptable media widths		210 to 1371 mm (8-5/16 to 54 in.)	182 to 762 mm (7-3/16 to 30 in.)
Printing / Cutting width *1		Maximum 1346 mm (53 in.)	Maximum 736 mm (29 in.)
Ink cartridges	Capacity	220 cc ±5 cc	
	Color	Four colors (cyan, magenta, yellow, and black)	
Printing resolution (Printing dot resolution)		Maximum 1,440 dpi	
Acceptable tool		Special blade for CAMM-1 series	
Cutting speed		10 to 300 mm/s	
Blade force		30 to 300 gf	
Blade offset compensation		0.000 to 1.500 mm (0 to 0.0591 in.)	
Software resolution (When cutting)		0.025 mm/step (0.000984 in./step)	
Distance accuracy (When printing)	While the print heater and dryer are running *2	Error of less than ±0.4 % of distance traveled, or ±0.5 mm, whichever is greater	
	While the print heater or dryer are not running *3	Error of less than ±0.3 % of distance traveled, or ±0.3 mm, whichever is greater	
Distance accuracy (When cutting) *4		Error of less than ±0.4 % of distance traveled, or ±0.3 mm, whichever is greater When distance correction has been performed (when the setting for [CALIBRATION] - [CUTTING ADJ.] has been made): Error of less than ±0.2 % of distance traveled, or ±0.1 mm, whichever is greater	
Repetition accuracy (When cutting) *4*5		±0.1 mm or less	
Repetition between printing and cutting *4*6		±0.5 mm or less	
Alignment accuracy for printing and cutting when reloading media *4*7		Error of less than ±0.5 % of distance traveled, or ±3 mm, whichever is greater	
Media dryer		Heating method, Setting range for the preset temperature: 35 to 50 °C (95 to 122 °F)	
Ink-fixing device		Print heater, Setting range for the preset temperature: 35 to 50 °C (95 to 122 °F)	
Interface		Ethernet (10BASE-T/100BASE-TX, automatic switching)	USB Interface (compliant with Universal Serial Bus Specification Revision 1.1)
Power-saving function		Automatic sleep feature (compliant with the International ENERGY STAR® Office Equipment Program)	
Power supply	Voltage and frequency	AC 100 to 120 V ±10 %, 50 / 60 Hz or AC 220 to 240 V ±10 %, 50 / 60 Hz	
	Required power capacity	8.8 A (100 to 120 V) or 4.7 A (220 to 240 V)	6 A (100 to 120 V) or 3 A (220 to 240 V)
Power consumption	During operation	Approx. 1080 W (100 to 120 V) or 1230 W (220 to 240 V)	Approx. 470 W (100 to 120 V) or 650 W (220 to 240 V)
	Sleep mode	Approx. 30 W	Approx. 29 W
Acoustic noise level	During operation	64 dB (A) or less (according to ISO 7779)	
	During standby	40 dB (A) or less (according to ISO 7779)	
Dimensions (With stand)		2390 (W) x 800 (D) x 1291 (H) mm (94-1/8 (W) x 31-1/2 (D) x 50-7/8 (H) in.)	1720 (W) x 770 (D) x 1275 (H) mm (67-3/4 (W) x 30-3/8 (D) x 50-1/4 (H) in.)
Weight (With stand)		149 kg (329 lb.)	124 kg (273 lb.)
Packed dimensions		2560 (W) x 830 (D) x 1035 (H) mm (101 (W) x 32-3/4 (D) x 40-3/4 (H) in.)	1890 (W) x 830 (D) x 900 (H) mm (74-1/2 (W) x 32-3/4 (D) x 35-1/2 (H) in.)
Packed weight		200 kg (441 lb.)	161 kg (355 lb.)
Environment	Power on	Temperature: 15 to 32 °C (59 to 90 °F) (20 °C [68 °F] or more recommended), humidity: 35 to 80 % (no condensation)	
	Power off	Temperature: 5 to 40 °C (41 to 104 °F), humidity: 20 to 80 % (no condensation)	
Included items		Stand, power cord, blade, blade holder, replacement blade for separating knife, cleaning kit, software RIP, manuals, etc.	

\*1 The length of printing or cutting is subject to the limitations of the program or driver.

\*2 At Roland SV-G-1270G, print travel: 1m. Preset temperature for the print heater: 37 °C (98 °F), preset temperature for the dryer: 40 °C (104 °F) Temperature: 25 °C (77 °F), humidity: 50 %

\*3 At Roland SV-G-1270G, print travel: 1m. Temperature: 25 °C (77 °F), humidity: 50 %

\*4 Not assured when the print heater or dryer is used.

\*5 Provided that media length is under 3000 mm. Temperature: 25 °C (77 °F)  
Excluding possible shift caused by expansion / contraction of the media and / or by reloading the media

\*6 Provided that media length is under 3000mm. Temperature: 25 °C (77 °F).  
Excluding possible shift caused by expansion / contraction of the media and / or by reloading the media

\*7 Media type: Roland SV-G-1270G. Data size: 1000 mm in the media-feed direction, 1346 mm in the carriage-movement direction.  
No lamination. Automatic detection of crop marks at 4 points when media is reloaded.  
During cutting, [PREFEED] menu item must be set to [ENABLE]. Temperature: 25 °C (77 °F).  
Excludes the effects of slanted movement and of expansion and contraction of the media.

VersaWorks System Requirements

Operating system	Windows® XP Professional Service Pack 1 or later or Windows® 2000 Service Pack 4	RAM	1 GB or more recommended
CPU	Pentium 4 2.0 GHz or faster recommended	Free hard-disk space	40 GB or more recommended

Options

ECO-SOL MEDIA (for Signage)	SPVC-G-1270T	Vinyl sheet with gloss surface, adhesive, 1270 mm x 20 m (50" x 65')	ECO-SOL MEDIA (for Decals)	SCM-GSPVC-40-610	PVC monomeric silver film, adhesive, 610 mm (24.01") x 40 m (131.23 ft)
	SPVCB-1270	PVC banner, 1270 mm x 20 m (50" x 65')		SP-M-610	Matte PET film, 610 mm (24.01") x 30 m (98.42 ft)
	SVB-B-1270	PVC banner, blackout, 1270 mm x 20 m (50" x 65')		SP-SG-610G	Gray adhesive, 610 mm (24.01") x 30 m (98.42 ft)
	SV-G-1270G	Gray adhesive vinyl, 1270 mm x 20 m (50" x 65')	ECO-SOL MEDIA (for Garment Heat Transfer)	SP-SG-610TR	Removable adhesive, 610 mm (24.01") x 30 m (98.42 ft)
	SP-SG-1270G	PET semi gloss, gray adhesive, 1270 mm x 30 m (50" x 98')		SCM-TTRH-25-750	Garment heat transfer material, 750 mm x 25 m (29.52") x (82 ft)
	SP-SG-1270TR	PET semi gloss, removable adhesive, 1270 mm x 30 m (50" x 98')		HTSP-10-500	Special silicon paper for matte finish, 500 mm x 10 m (19.68") x (32.8 ft)
	SP-M-1270	Matte PET film, 1270 mm x 30 m (50" x 98')		HTTA-10-500	Application film, 500 mm x 10 mm (19.68" x 32.8 ft)
	SPP-G-1250	Glossy paper, 1250 mm x 30 m (49-3/16" x 98')	ECO-SOL INK	ESL-MG	Magenta, 220 cc
	SPC-1300	Polyester cloth, 1300 mm x 30 m (51-1/8" x 98')		ESL-YE	Yellow, 220 cc
	SFPLF-1300	Backlit film, 1300 mm x 30 m (51-1/8" x 98')		ESL-CY	Cyan, 220 cc
	SCM-GBMW-50-1180	Polyethylene banner, 1180 mm x 50 m (46-7/16" x 164')		ESL-BK	Black, 220 cc
ECO-SOL MEDIA (for Decals)	SCM-GPPG-50-914	White glossy photo paper, 914 mm x 50 m (36" x 164')	Blades	ZEC-U5022	For thick, reflective and fluorescent vinyl, 2 pcs.
	SCM-GPPG-50-1270	White glossy photo paper, 1270 mm x 50 m (50" x 164')		ZEC-U5025	For thick, reflective and fluorescent vinyl, 5 pcs.
	SCM-GGPET40-500	Polyester gold gloss film, adhesive, 500 mm (19.68") x 40 m (131.23 ft)	Blade holders	XD-CH3	Blade holder with blade extention abjuser, made of resin
	SCM-GSPET40-500	Polyester silver gloss film, adhesive, 500 mm (19.68") x 40 m (131.23 ft)		TU-550	For SP-540V
	SCM-GGPVC-40-610	PVC monomeric gold film, adhesive, 610 mm (24.01") x 40 m (131.23 ft)		TU-300	For SP-300V

**ISO 14001 and ISO 9001 Certified**

Roland pursues both environmental protection and continuous quality improvement. Under the philosophy of preserving the environment and human health, Roland DG is actively working to abolish organic solvents in production, to reduce and recycle waste, to reduce power use, and to purchase recycled products. Roland DG constantly strives to provide the most highly reliable products available.



Roland reserves the right to make changes in specifications, materials or accessories without notice. Your actual output may vary. For optimum output quality, periodic maintenance to critical components may be required. Please contact your Roland dealer for details. No guarantee or warranty is implied other than expressly stated. Roland shall not be liable for any incidental or consequential damages, whether foreseeable or not, caused by defects in such products.

PostScript is a trademark of Adobe Systems Incorporated. All other trademarks are the property of their respective owners.



AUTHORIZED DEALER:

Printed in Japan. RDG90311 '05 FEB. A-4 G-S

www.rolanddg.com



# VersaCAMM

Roland DG Corporation

## SP-540V & SP-300V

### Inkjet Printer/Digital Die-Cutters



ECO-SOL INK PRINTER/CUTTER SP-540V

54"

ECO-SOL INK PRINTER/CUTTER SP-300V

30"

# Do It All





# VersaCAMM. The Perfect Fit

VersaCAMM is Roland's best-selling integrated print/cut solution and everything you could ask for in a low-cost digital printer. Available in both 30-inch-wide and 54-inch-wide models, VersaCAMM delivers 4-color inkjet printing and precision digital die-cutting in one device. Now you can print and cut a wide variety of applications that last up to three years outdoors without lamination.\*

\*Three years outdoor durability is based on accelerated weather tests conducted by Roland DG. Results may vary depending upon location and application. Severe applications, such as floor and vehicle graphics, require lamination.



**VersaCAMM**  
Roland DG Corporation

**54" ECO-SOL INK Printer/Cutter**



**SP-540V**

**30" ECO-SOL INK Printer/Cutter**



**SP-300V**

## ECO-SOL INK—Safe to Use and Environmentally Friendly

Revolutionary ECO-SOL INK is formulated to be almost entirely odor free and requires no special ventilation or environmental equipment, yet produces brilliant graphics that are water, scratch and UV resistant. Available in CMYK, ECO-SOL INK is packaged in convenient 220 ml cartridges.



## Keeping Costs Low

The combination of an integrated heating system and ECO-SOL INK allows the VersaCAMM to print on a wide variety of commercially available media. Choose from uncoated vinyl and banner materials for lower production costs, or Roland's premium SOL MEDIA, including backlit and

glossy paper, for dependable indoor and outdoor use. As always, Roland provides unparalleled support, including printing profiles for the most popular media.

## One Complete Solution for Printing & Digital Die-Cutting

Whether you use it as a printer, printer/cutter or stand-alone vinyl cutter, VersaCAMM will provide dependable performance. This three-in-one versatility allows you to handle a wide variety of jobs including even the most complex applications. As a cutter, VersaCAMM digitally die-cuts decals, signs, labels, etc., quickly and precisely. Once an image has been printed,



it can be automatically die-cut without having to reload or reposition the media. If lamination is needed, Roland's unique Quadralign® optical registration system automatically generates crop marks at all four corners, allowing you to remove a print, laminate and then reload it for letter perfect die-cutting.

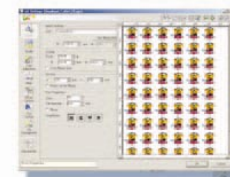
## A Host of Advanced Features

- An automatic sheet cutter for separating output after it has been printed.
- A sensor that produces an audible warning when ink is running low.
- A media tracking system allows you to record media changes and measure the media you have remaining.
- An adjustable print head height for the SP-540V.
- The SP-540V includes five detachable middle pinch rollers, ensuring precision media feeding for quality printing even on heavyweight banner stock.

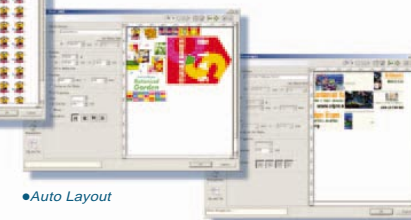
## Roland VersaWorks™ — The Perfect Partner For Your VersaCAMM



Roland's newest and most advanced RIP, VersaWorks, is both incredibly powerful and amazingly easy to use. VersaWorks features a graphical user interface (GUI) for efficient operation—even for first time users. Simply click on buttons to open menus. Drag and drop files to the printer queue. An automatic update feature ensures that you are always working with the latest VersaWorks version and profiles. VersaWorks is compatible with Windows® XP Professional/2000.



•Multiple copies of single image



•Auto Layout

•Tiling

## More VersaWorks Features:

- Wide variety of convenient layout functions including scaling, cropping, rotating, auto layout and tiling etc.
- Latest Adobe® PostScript® 3™ RIP engine supports popular software and common formats such as TIFF, JPEG, EPS, PostScript and PDF 1.5.
- Advanced color management dedicated for Roland inkjet printers such as calibration, linearization, ICC Profile Creating Wizard and software proofing.



•VersaWork's main menu



•Buttons on main menu open most functions.

